

bee

the community around green

BE is a “people” person who finds nothing more rewarding than loving relationships with kindred-spirits.

Affiliation ... Consciousness ... Belonging ... Human Bond ... Consensus ... Community ... are vital signs and concepts that resonate with **BE**.

Always at home in groups, **BE** enjoys interacting, coordinating and collaborating together. Social networking and FaceBook were invented for **BE**!

BE finds that aspiration for personal growth is more fun and enriching when achieved among like-minded communities. Preferring cooperation over competition, **BE** wants to be liked and accepted by other people.

BE thrives in business environments where one can engage with co-workers and clients. Rarely seeking status in the workplace hierarchy, **BE** strives for teamwork and cooperation between interdependent units.

BE sometimes advocates that success does not necessarily bring happiness and may opt out of the “rat race” for kinder enterprise that respects people as equal and important.

BE will sacrifice something now, for approval now. Often influenced by peers, **BE** tends to conform to the norms of the work group.

BE appreciates the natural environment as both a physical and a spiritual resource that should be cared for and preserved.



Strength Finder
Adaptability
Communication
Connectedness
Harmony
Empathy
Includer
Individuation
Relator
Responsibility

Motive Traits
Acceptance
Interdependence
Low Status
Low Vengeance
Family
Idealism

...in harmony with me

be

the community around green

Real-Time Benefits of Self-Knowledge:

Self-discovery through assessments can be intuitive, as well as fun. It reveals how unique we truly are from our neighbor; how we differ from even our immediate family members. More importantly, assessments provide illuminating evidence about our individual values and motives ... Insight we can utilize for keen decision-making, life direction, and in support of fulfilling our purpose.

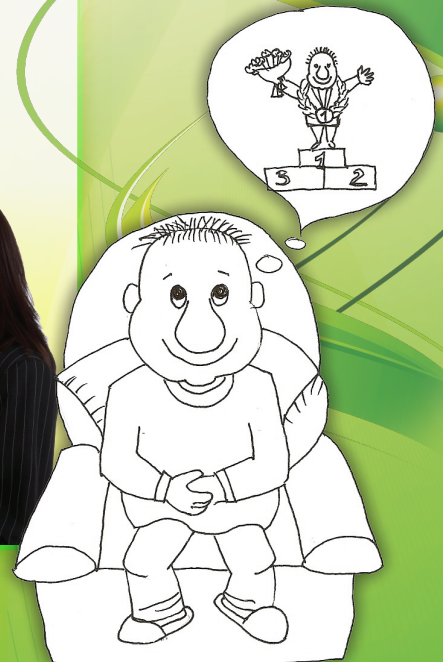
For instance, BE might consider:

- *Does my potential job require me to work alone?*
(BE is better suited to a position that engages with people)
- *Is my fiancé communicative, adaptable and group oriented?*
(BE is all about harmony and a good match)
- *And, all wise parents would be prudent to know the peer groups of their Teenage BE.*

We welcome questions about your assessment and findings. For personalized interpretation, as well as StrengthFinder and Motive Traits definitions and tools, we invite you to visit us online at www.genewize.com.

Just a Note ...

While your assessment answers identify preferences toward BE characteristics, we do not imply that BE is an exclusive tendency. Most people have varying degrees and combinations of preferences toward each of the BE, HAVE, DO, and BECOME types. That exquisite blend is the spice of your individualism.



...in harmony with me